



TECHNICAL GUIDE

FERNIE ALPINE RESORT CANADA CUP DOWNHILL

Fernie, British Columbia

Saturday, July 17, 2021

Sunday, July 18, 2021

Presented by:

Fernie Alpine Resort | SE Racing | Cycling Canada

CYCLING
CYCLISME
CANADA



Event Description

Fernie Alpine Resort is proud to be the host site for the Dunbar Series Fernie Legendary Summer Canada Cup/Bc Cup Downhill Race on July 18, 2021. Fernie Alpine Resort has a long history of hosting great downhill events including Canada Cup & BC Cup races. Competitors can expect a fun, technical course complete with the infamous “Canadian Section” steeps.

Organizer

Organizer:	Fernie Alpine Resort
Contact Address:	5339 Ski Hill Road, Fernie, British Columbia, V0B1M6
Primary Contact Name:	Jeni Pearson
Contact Telephone:	250-423-2401
Contact Email:	events@skifernie.com
Event Website:	www.skifernie.com

Event Rules/Licenses:

UCI Regulations and CC specific regulations will be enforced for all Categories.

Valid UCI international licenses are required for Canada Cup UCI categories (Jr/Elite Men & Jr/Elite Women). Holders of UCI international licenses that do not bear a photograph will be required to present an approved and valid government photo ID in addition to their UCI license.

Licence Type	Fee*
UCI licence	
12 and under	\$55
13 – 16 years	\$70
17 – 22 years	\$135
23 and older	\$160

Day Licenses

If you DO NOT hold a current CCA/UCI Race Licence or Cycling BC Provincial Race License, insurance is required.

- \$5.00 YOUTH 16 & under (DOB after January 1, 2005)
- \$12.00 JUNIOR & ADULT 17 & over (DOB before December 31, 2004)
- \$15.00 OUT-OF-COUNTRY FOREIGN RIDER

Insurance is valid only for Canadian residents covered under a Federal or Provincial Hospital or Medical Plan. Foreign Riders must sign a declaration that adequate out-of-country medical insurance has been obtained and have a race license from their own country of residence.

Insurance is valid only for Canadian residents covered under a Federal or Provincial Hospital or Medical Plan. Foreign Riders must sign a declaration that adequate out-of-country medical insurance has been obtained and have a race license from their own country of residence.

Prizes/Points

Prize money will be awarded as Per 2021 UCI regulations and UCI 2021 financial obligations.

Canada Cup Series points will be awarded as outlined in the table below.


*** As a result of an abbreviated season consisting of only two Canada Cup events, there will be no Canada Cup Series Ranking maintained or Leader's jerseys awarded in 2021.*


UCI Prize Purse:

Elite Men/Hommes		
Place	UCI EUR	UCI CAD
1st	€ 250	\$382.81
2nd	€ 200	\$306.25
3rd	€ 150	\$229.69
4th	€ 125	\$191.41
5th	€ 100	\$153.13
6th	€ 90	\$137.81
7th	€ 80	\$122.50
8th	€ 70	\$107.19
9th	-	-
10th	-	-
TOTAL	€ 1,065	\$1,630.78

Elite Women/Femmes		
Place	UCI EUR	UCI CAD
1st	€ 250	\$382.81
2nd	€ 200	\$306.25
3rd	€ 150	\$229.69
4th	€ 125	\$191.41
5th	€ 100	\$153.13
6th	€ 90	\$137.81
7th	€ 80	\$122.50
8th	€ 70	\$107.19
9th	-	-
10th	-	-
TOTAL	€ 1,065	\$1,630.78

Categories

Canada Cup Categories	
Elite Men (Junior Expert combined for UCI points & results)	
Elite Women (Junior combined for UCI points & results)	

BC Cup Categories	
U15 Men	
U17 Sport Men	
U17 Expert Men	
U17 Women	
Junior Sport Men 17-18	
Junior Expert Men 17-18	
Junior Women 17-18	
Sport / Expert Elite Men 19-34	
Sport / Expert Elite Women 19-34	
Masters Men 35-44	
Master Men 45-54	
Master Men 55+	
Master Women 35+	
Open Women 15+ (Non-licensed Junior)	

Entry Procedures/Limitations:

UCI Elite and Junior Expert: Registration must be completed on/ or prior to Friday April 16th at 18:00 PT. For Late entries, a fine of \$50.00CDN will be applied. All other categories have till 13:00 on Saturday, July 17th to register.

Entry Fees:

Class	Pre-Registration Fee	On-Site Registration Fee
Elite PRO	\$75.00	\$80.00
All other categories	\$65.00	\$70.00

Chairlift Fees:

All competitors receive **50% off** full day lift tickets for Saturday, July 17th and Sunday, July 18th.

Lift ticket rates for a 2 day (Saturday & Sunday) racer ticket will be as follows

Adult (18+) - \$61.95 plus gst

Youth (13-17) - \$45.95 plus gst

Competitors must purchase their racer ticket at check in/plate pickup to receive the discount.

In addition, competitors will receive **20% off** their lift ticket for Friday, July 16th if they would like to ride that day. Competitors must be pre-registered by Thursday, July 17th to receive the discount. To purchase the ticket, competitors need to go into the Guest Services, located in the main plaza and say they are with the race, the staff will confirm your name from the pre-registered competitor list and give you the discount.

Competitors can also receive **20% off** their lift ticket for Monday, July 19th if they would like to stay and ride the bike park. Please go to Guest Services and let them know you were a competitor to receive the discount.

Registration

Online Registration Link:	https://ccnbikes.com/#!/series/2021-dunbar-summer-series
Online Registration Deadline:	Friday July 16th, 2021,
On-site Registration Info:	Last day – Saturday July 17th at 13:00
Late Registration Fee:	Add \$5.00

Race Package Pick-up:

Registration Area will in the Griz Daylodge located in the main plaza.

Package pick-up will be available at the registration area from Friday July 16th 17:00 – 19:00 MST, and Saturday, July 17th 9:00-13:00. Last chance plate pick up will be Sunday, July 18th from 9:00-10:00.

Race packages can be picked up by the rider or a representative, however the riders UCI Licence must be presented to pick up the package. If the package is being picked up by a representative they must have a valid UCI Licence and the racer they are picking up the package for must have completed their Resort Event Waiver online.

All racers are encouraged to complete their Resort Event Waiver online prior to race package pick-up to speed up the registration process. Racers ages 16yrs+ must complete the Resort Event Waiver. Racers ages 15yr and younger must have their parent or legal guardian complete BOTH a Resort Event Waiver and Parental Consent Waiver.

Resort online waivers link: <https://passes.skircr.com/waivers-special/signup.aspx>

Training Periods:

The course will be open to racers only during designated official Training times. During these times bike plates are mandatory. Team managers can obtain bike plates from the registration by presenting a valid UCI Licence. Failure to run a bike plate during official training periods will result in disqualification or fine from UCI.

Category	Saturday, July 17	Sunday, July 18
Open Practice (All Categories)	10:00 – 12:45	10:00 – 11:25
Junior Expert & Elite	13:00 – 14:00	11:30 – 12:00
Open Practice (All Categories)	14:00 – 15:40	-
Junior Expert & Elite	15:45 – 17:00 (Seeding Runs)	-

Please note: On Friday, July 16th the course will be marked and open from 11:45 – 15:45. This is NOT an official training period.

Schedule

***All times are listed in Mountain Daylight Time (MDT)*



Friday, July 16th	
10:30-16:30 Elk Chair Open	Regular Bike Park Operations DH Course will be marked. Note lower half of the course is accessible to the public as it can be accessed via the Elk Chair.
11:45-16:30 Timber Chair Open	Timber Chair open to access full course** Course closed at 4pm to bikers to allow for course walk.
16:00 - 17:00	Course Walk DO NOT WALK COURSE BEFORE 16:00 Racers can purchase a single ride ticket to walk the course.
17:00-19:00	Plate Pick-up & New Registrations *CASH ONLY for day of registrations
18:30	Official Canada Cup Riders & Team Meeting

** Timber Chair open to registered racers only. Competitors wishing to inspect the course before they decide to register Friday night can go into Guest Services and explain they would like to inspect the course to receive a racer ticket and access to the Timber Chair and course.

Saturday, July 17th	
9:00-13:00	Plate Pick-Up & New Registrations Jr Ex & Elit Plate Pickup Only *CASH ONLY for day of registrations
10:00-12:45	Open Practice (All Categories)
13:00-14:00	Jr Ex & Elite Practice
14:00-15:40	Open Practice (All Categories)
15:45-17:00	Jr Ex & Elite Seeding Runs Course closed after last seeding run
17:30	Dunbar Special Event Competition on Lizard Lane
19:30	Racers Meeting If Available: - Seeding run results and podiums - Race day start times posted
Last upload at 16:45	

Sunday, July 17th	
9:00-10:00	Last Chance Plate Pick-up No new registrations
10:00-11:25	Open Practice (All Categories)
11:30-12:00	Jr Ex & Elite Practice
12:15-12:50	Adaptive Race
13:00 til Complete	Race - Awards and podiums to follow shortly after final racer

Last upload at 16:45



Start Area/Rider Call-ups:

The start line for the DH is located about half way down the mountain from the Timber Chairlift. Riders will take the access road and follow the signs to the race start.

UCI Elites and Junior Experts will be staged approximately fifteen minutes prior to start time.

Start order for Canada Cup categories will be determined by the results of Saturday's Seeding Runs. The start order for the Seeding Runs will be determined as follows:

Junior/Elite

1. All riders on the current UCI ranking
2. Random order by plate numbers distributed.

Other Categories

1. Random order by plate numbers distributed.

Elite Athlete/Team Managers Meeting:

The Elite Athlete and Team Managers meeting is scheduled for Friday, July 16th at 18:30

Event Officials

Organizer	Stephen Exley / Fernie Alpine Resort
Chief Commissaire	Geordie Ma
Assistant-Chief Commissaire	Mylene Lefebvre
Secretary	Robert Armstrong

Starter	Vitaly Rudenko
Finish	Gayle Jones
Panel Member	TBD

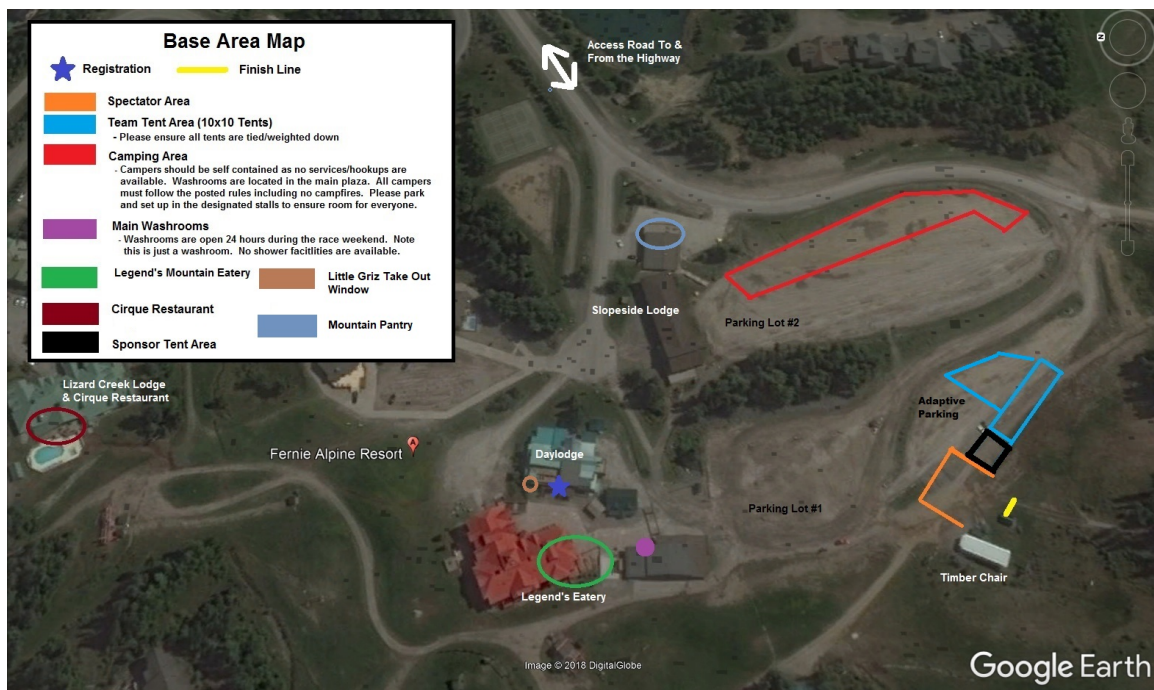
Venue Information

Fernie Alpine Resort is located in the south east corner of British Columbia within in the Lizard Range of the Canadian Rocky Mountains. With 38 bike trails, the resort has something to offer for everyone including wide machine-made flowing trails for beginner and intermediate riders, and challenging steep and technical single track, berms and wall rides for advance and expert riders. Add in lift accessed alpine hiking trails, mountain top & mountain side dining, cross country trails and on mountain accommodation and you have a true mountain adventure hub!

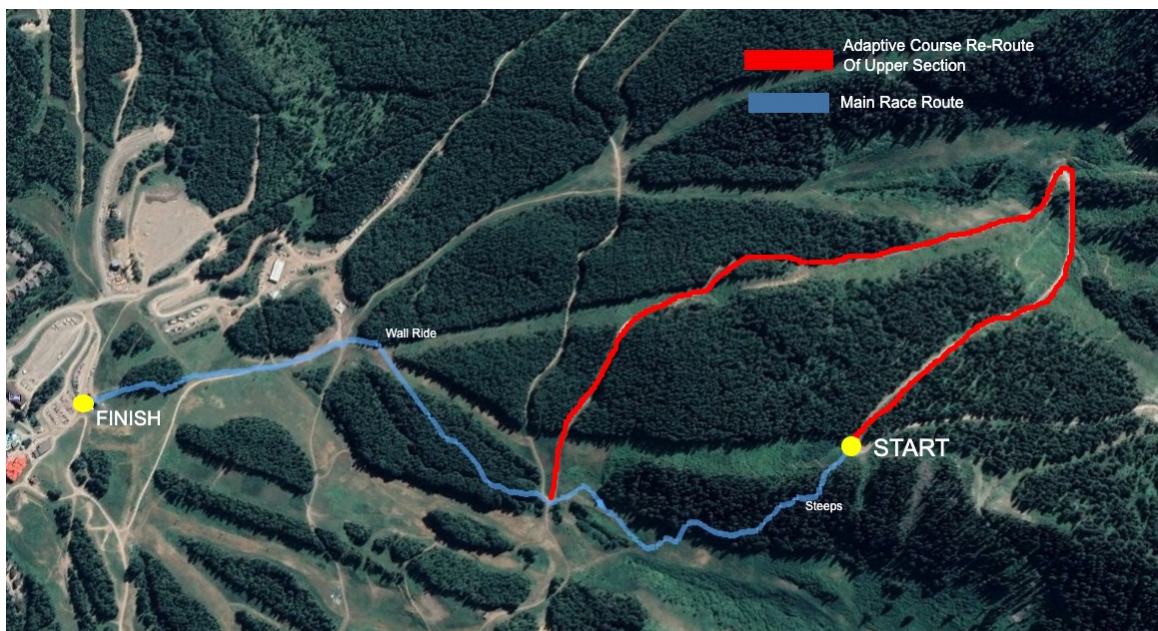
Fernie Alpine Resort Is located only 5km from the town of Fernie, that has a historic downtown area with a variety of dining and shopping options as well as golfing and world class fly fishing.

Fernie is a mountain bike town with trails surrounding Fernie from all sides. There are 7 areas around Fernie (including Fernie Alpine Resort) representing over 100 trails to ride including easy beginner trails, intermediate XC and all-mountain trails, and advanced XC and DH trails. With an extensive and ever-growing number of trails you will no doubt find your perfect ride in Fernie, most you can access right from town.

Base Area Map



Course Maps



Top half of the course starts with the infamous technical “Canadian Section” steeps which is a trail used solely for the Canada/BC Cup race. Course then connects with the fast and loamy “Bicycle Thief/Cripple Creek” trail through the woods. The trail then exits onto a wall ride feature before a high-speed section to the Rockstar Tree Island and the final finish ramp.

Medical Services

Fernie Alpine Resort Patrol – 250.423.2426 (available during event & resort lift operating hours)

Elk Valley Hospital – 250.423.4453 (open 24 hours)
1501 5 Ave, Fernie, BC V0B 1M0

Emergencies – Dial 911 (available 24 hours)

Accommodation

Hotels

All competitors receive a 20% discount off accommodation at **Lizard Creek Lodge** for the event weekend. To book a room please call the hotel at **1-877-228-1948** and state the following booking code: **“BC21”**
Note: The discount is subject to room availability so book early before the hotel sells out! Discount is only valid for phone bookings direct with the hotel (discount not available for online bookings).

Lizard Creek Lodge

The 4.5 star “mountain chic” Lizard Creek Lodge is the perfect mountainside accommodation at Fernie Alpine Resort. Distinguished by its convenient location on Highline Drive, the hotel is located just steps

from the Elk Chairlift. The outdoor pool and hot tubs overlook the mountains and the main lodge is home to Cirque Restaurant. Each of the luxurious suites has differing configurations. Studios, one, two and three bedroom suites offer full kitchens and a fireplace in the lounge

For other hotel options please call 1-800-258-7669 or visit www.skircr.com/vacations

Camping

For those looking for traditional campsites you can reserve spots in the following campgrounds. Both the Fernie RV Resort and Mt Fernie Provincial Park campgrounds are a short drive and located within 7km from the resort and venue. Mountain Shadows Campground is located in Sparwood and is approximately 35km (25minute drive) from the resort and venue. Reservations ahead of time are strongly recommended as local campgrounds often sell out. Each campground will have their own COVID 19 protocols, reservation & cancellation policies, please contact the campground directly for details.

Fernie RV Resort (full serviced sites and amenities including internet and laundry)

<http://fernieresort.com/>

Mt Fernie Provincial Park (un-serviced sites but has washrooms, shower facilities and proper campsites with picnic tables and firepits)

http://www.env.gov.bc.ca/bcparks/explore/parkpgs/mt_fernie/

Mountain Shadows Campground (serviced sites)

<https://www.mountainshadows.ca/>

On-Site Camping

Basic parking lot camping is available onsite at the resort in the back of parking lot #2. Campers should be self-contained as there are no services available. The washrooms in the plaza will be open 24 hours, however there are no other services available including no shower facilities, no water tap or power available. On site camping is \$30/night and is on a first come first serve basis. However, we are asking anyone who would like to camp onsite to please fill out the following form so we can make sure we have spots for everyone. Camping form link: <https://form.jotform.com/210113920877250>

Directions to Venue

Venue Address: Fernie Alpine Resort, 5339 Ski Hill Road, Fernie, BC V0B1M6

By Car:

Fernie Alpine Resort is located in the south-east corner of the B.C Rockies on Highway 3 approximately 60km (40miles) from the Alberta and U.S Borders. It is 5km (3 miles) from the City of Fernie and only 1.5km up the hill from the highway intersection. Highway 3 is the easiest of all Highways going through the Rocky Mountaintains connecting Alberta and BC. From the USA, Fernie is located 30 minutes from the US Border, most easily accessed via Kalispell, Montana and the Roosevelt 24hr border crossing.

City	Distance From Fernie	Approx Drive Time
Calgary, Alberta	296 km	3 Hours
Cranbrook, BC	96 km	1 Hour
Kelowna, BC	626km	7.75 Hours
Kalispell, Montana USA*	188 km	2 Hours

By Air:

3 airports are all within a 3 hour drive of Fernie Alpine Resort.

- Due to COVID 19, flights into these airports may be subject to screening, testing, self-isolation requirements and other rules. Please check with the airport and airlines for their latest in COVID 19 protocols and procedures.

The Canadian Rockies Airport (YXC) in Cranbrook is the closet airport to Fernie. There are regional flights from Vancouver, Calgary and Kelowna. Serviced by Air Canada, Pacific Coastal Airlines and Integra Air. Car rental available.

Calgary International Airport (YVR) in Calgary has direct international flights from around the globe along with frequent daily domestic and trans-border flights. Serviced by all major airlines. Car rentals available.

Glacier Park International Airport (FCA) in Kalispell, Montana has daily flights from most US Hubs. Serviced by Delta, Northwest Airlines, Allegiant Air and Alaska/Horizon Airlines. Car rentals are available – border crossing required* (closest crossing is Roosevelt which is a 24 hour crossing).

*NOTE: As of the time of writing this guide, the land border between Canada and the United States is closed to non-essential travel. Please check to ensure the border is once again open to non-essential travel before choosing to drive up from the US and ensure you understand any COVID screening, testing or self-isolation rules that may be in place at the border and Fernie Interior Health Region.

On-site Team Setup Information

Team setup is available in the upper section of Parking Lot #1 by the finish area. See base area map for team tent location. Please ensure you bring weights to tie down and secure your pop up tents in the parking lot as it can be windy through there.