



THUNDER BAY XCM EVENT GUIDE

**XCM CANADIAN
CHAMPIONSHIPS**

presented by | présenté par

tbaytel

2024



CANADIAN CHAMPIONSHIPS
CHAMPIONNATS CANADIENS

MOUNTAIN | XCM | MONTAGNE

LAND ACKNOWLEDGEMENT

The trails we ride are on the traditional lands of the Anishinabeg Nation and the traditional territory of Fort William First Nation, signatory to the Robinson-Superior Treaty of 1850. We recognize and honour the past, present, and future caretakers of the lands and waters which surround us. We are grateful for the privilege of recreating on this land, for the joy of riding our bikes together, and for the opportunity we have to connect with nature. As a community of mountain bikers, we recognize we also have a responsibility for the stewardship of this land.

**EVENT GUIDE BROUGHT TO YOU BY
GENERATOR INSIGHTS STRATEGY CREATIVE**

XCMTBAY.COM



WELCOME

Dear Competitors, Spectators, Volunteers, and Sponsors,

On behalf of the organizing committee, it is my pleasure to extend a warm welcome to all of you to the 2024 XCM Canadian Championship presented by Tbaytel. We are thrilled to host this prestigious event and are excited to bring together some of the best mountain bikers from across the country.

This championship is more than just a race; it's a celebration of the dedication and passion that defines our cycling community. We are incredibly proud to showcase the exceptional work of the Blacksheep Mountain Bike Club, whose tireless efforts have made Trowbridge Forest the incredible venue it is today. For the past 25 years, the club has been the driving force behind the development and maintenance of these trails, ensuring they remain a top destination for mountain biking enthusiasts.

To our competitors, we applaud your commitment and the countless hours of training that have brought you here. We wish you the best of luck as you take on these challenging trails and strive for excellence.

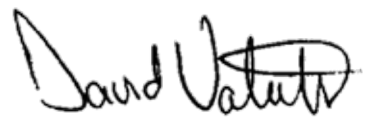
To our spectators, your enthusiasm and support bring an energy that fuels the spirit of competition. We hope you enjoy the thrilling races and take in the stunning natural beauty of Trowbridge Forest.

To our volunteers, your hard work and dedication are the backbone of this event. We couldn't do it without you, and we are deeply grateful for your contribution to making this championship a success.

And to our sponsors, especially our presenting sponsor Tbaytel, thank you for your generous support. Your partnership is vital in bringing this event to life and promoting the sport of mountain biking across Canada.

We look forward to an exciting and memorable championship. Enjoy the races, the camaraderie, and the celebration of mountain biking!

Best regards,



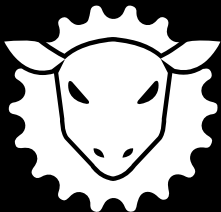
David Valente
President,
Blacksheep Mountain Bike Club



DONATE TO WIN



 **ROLLIN' THUNDER**
BIKE - BOARD - SKI - OUTDOOR



SCHEDULE

All events to take place at Kinsmen Park, 16 Copenhagen Rd,
Thunder Bay, Ontario, P7B 6B3 unless otherwise noted

Tuesday 03/09/2024

9:00am – 6:00pm Course marked for un-official training
All categories

5:00pm ONLINE REGISTRATION CLOSES

Wednesday 04/09/2024

9:00am – 6:00pm Course marked for un-official training
All categories

Thursday 05/09/2024

9:00 am – 6:00pm Course marked for un-official training
All categories

2:00pm – 7:00pm Race Package Pick Up for Canadian Championship 90km Riders

4:00pm – 8:00pm Demo bike available from various brands

4:00pm – 8:00pm Trowbridge Campground Check In

5:30pm–8:30pm Volunteer Kit Pick Up

6:30pm–7:30pm Course Marshall Meeting.

7:00pm – 9:00pm VIP/Athlete Reception (by invitation only)

Friday 06/09/2024

9:00am – 6:00pm Course Open for Training (Bike Plate Mandatory)

10:00 am – 6:30pm Race Package Pick Up for Canadian Championship 90km Riders
Package Pick up – all XCM Championship category riders must have
signed in and picked up race package by 7:00pm. This can be done
by team manager/coach with copy of licence and permission letter

2:00pm – 5:30pm Demo bike available from various brands

4:00pm –8:00pm Trowbridge Campground Check In

5:00pm – 8:00pm Race Package Pick Up for Challenge Categories 5km, 15km, 27km, 60km

6:15pm Elite Athlete Q&A

6:45 pm Pre-race riders meeting – Canadian Challenge Categories

7:00 pm Coaches/Manager's meeting – Canadian Championship Categories

7:15pm – 8:30 pm Premier Screening of Anthill's *Anytime* Movie presented by Fresh Air

SCHEDULE

Saturday 07/09/2024

8:00 am - 5:00 pm Race Office open

9:00 am - 12:00pm Challenge Categories (XCM)

9:00am Canadian Challenge Start #1
Medium Course 27km

10:00am Canadian Challenge Start #2
Short Course 15km

11:00am Canadian Challenge Start #3
Mini-Miner 5km

12:10pm Canadian Challenge Awards ceremonies

1:00 pm Canadian Championship (XCM)

1:15 pm Canadian Challenge [60 KM] Categories (XCM)

7:00 pm Canadian Challenge Awards ceremonies

7:10pm Canadian Championship Awards ceremonies

7:45pm - 9:30 pm Wrap Up Concert with concert by The Selfies

Sunday 08/09/2024

11:00am Campground Check Out

THURSDAY NIGHT

Demo Night! 4pm - 8pm

Demos available at Kinsmen Park from various brands

ORBEA



FRIDAY NIGHT

Anthill's *Anytime* Movie presented by Fresh Air

Movie to start at approx 7:15pm following pre race meeting

- Free Popcorn
- Bring a blanket or folding chair to sit on

2024

CANADIAN CHAMPIONSHIPS
CHAMPIONNATS CANADIENS

MOUNTAIN | XCM | MONTAGNE
presented by / présentée par
tbaytel

Friday Night Event
Movie Premiere Of
ANYTIME
Kinsmen Park
7:30pm - 9pm

fresh air
SKING | RUNNING | CYCLING | LIFESTYLE

BLACK SHEEP
MOUNTAIN BIKE CLUB

ANTHILL FILMS

SATURDAY NIGHT

Trails and Ailes After Party – All Ages
Live entertainment with the Selfies

Join us for an electrifying afterparty with live entertainment, all for a great cause! The Blacksheep Mountain Bike Club invites you to an unforgettable night where we'll groove to the rhythm of live music while raising funds to support the maintenance of our beloved trails. Get ready to dance, mingle, and contribute to the preservation of the breathtaking trails that fuel our passion for mountain biking. Every beat, every laugh, and every donation will make a difference in sustaining these trails for generations to come. Let's come together, celebrate, and make a positive impact on our biking community. See you there!



Starting with an idea formed over sharing a home brew with friends and bringing that craft beer love to our community of Thunder Bay, Sleeping Giant Brewing Co. slowly grew with hard work and supportive customers from a few beers in 2012 to a diverse portfolio of beers daily.

Sleeping Giant Brewing Co. moved from its starter home to its current site in 2016 and added to the packaging and production line. Within a year, a unique taproom experience developed that looks over their many stainless tanks and an inclusive storefront to showcase their merchandise and some local collaborations to greet all who arrive at their door.

The logo for "The Selfies" features the word "THE" in a small, white, sans-serif font inside a red square. To the right of this square, the word "SELFIES" is written in a large, bold, blue, sans-serif font with a white outline.



GENERAL INFORMATION

LOCATION

Located just off the TransCanada Hwy, and only 5 minutes from the city center, Kinsmen Park, Thunder Bay is home to this year's XCM races. With the Trowbridge Campground adjacent to the park, those camping will have direct access to the race venue.

PARKING

There will be NO Race Day parking at Kinsmen except for Volunteers, Vendors, and Dignitaries. All racers are encouraged to consider the following options:

- Arrange drop off/pickup
- Utilize the shuttle system which leaves from Current River Arena
- Park Nearby at Faith City Church (360 Black Bay Rd) and bike or walk to venue (approx 2km)
- Park in Trowbridge Fall Campground Areas A and Upper C. Note that access to and from the parking area will be restricted from 8:30am to 12:00pm and from 12:45pm to 7:00pm. Due to this we only encourage those staying all day to park in this area.

SHUTTLE

There will be a shuttle starting at 7:30am leaving from Current River Arena (425 Grenville Ave). Please park at the arena and board the shuttle across the street at the school.

GENERAL INFORMATION

CAMPING

Camping is available at Trowbridge Campground which is directionally adjacent to Kinsmen Park. Those who have booked camping can check-in at the campground office anytime after 4:00pm day of registration. If wanting to check-in earlier, please contact vp@blacksheepmtb.com

SPECTATOR INFORMATION

We encourage everyone to come on out and stay to cheer on riders in all events. Please note that NO spectator bikes will be allowed on course and that all spectators must ensure that they don't impede the race in any way. The venue at Kinsmen Park will be the place to watch riders lap and finish, but Centennial Park will offer spectators a chance to get up close to riders as they ascend the "sliding hill." So grab a noise maker and come cheer on your favourite rider.

VIP TENT

This area will be available to XCM National Racers, Team Support Personal, Sponsors, and Dignitaries from 11:00am - 7:00pm. There will be food available, and the tent will make for a great place to step away from all the festivities.

FOOD

Marvellous Makings/Spit Fire Grill will be onsite with food to purchase including a prerace meeting pasta dinner, pancake breakfast, bbq lunch, pulled pork sandwich as well as other tasty treats and snacks. Cash and Card will be accepted.

WASHROOMS

There will be venue specific washrooms, as well as the regular washrooms in Kinsmen Park and Trowbridge Campground.

FIRST AID

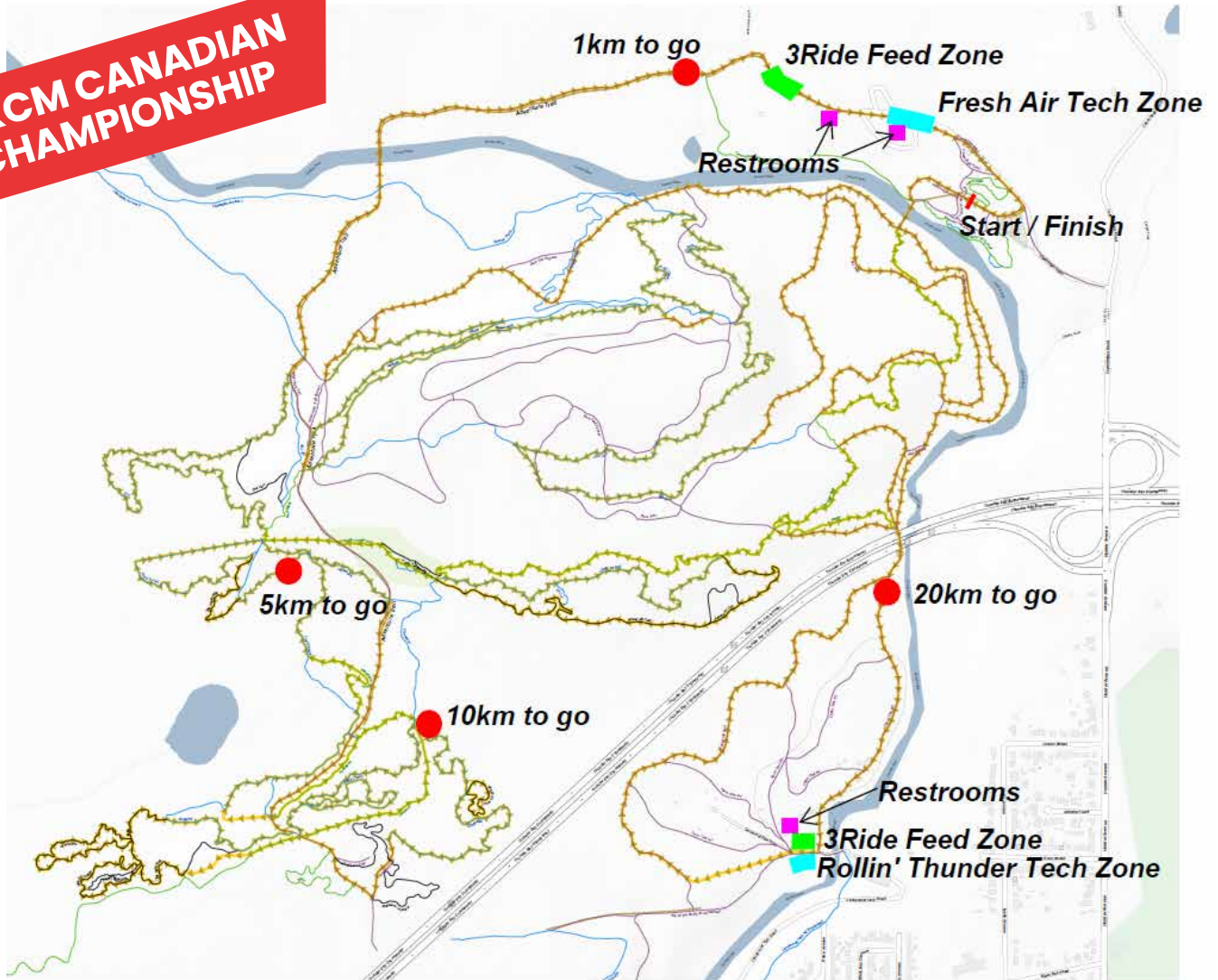
The Canadian Ski Patrol as well as paramedics from the City of Thunder Bay will be onsite throughout the race to tend to and emergencies on the course. If you see them on the trails, please give them the space they need.

TIMING

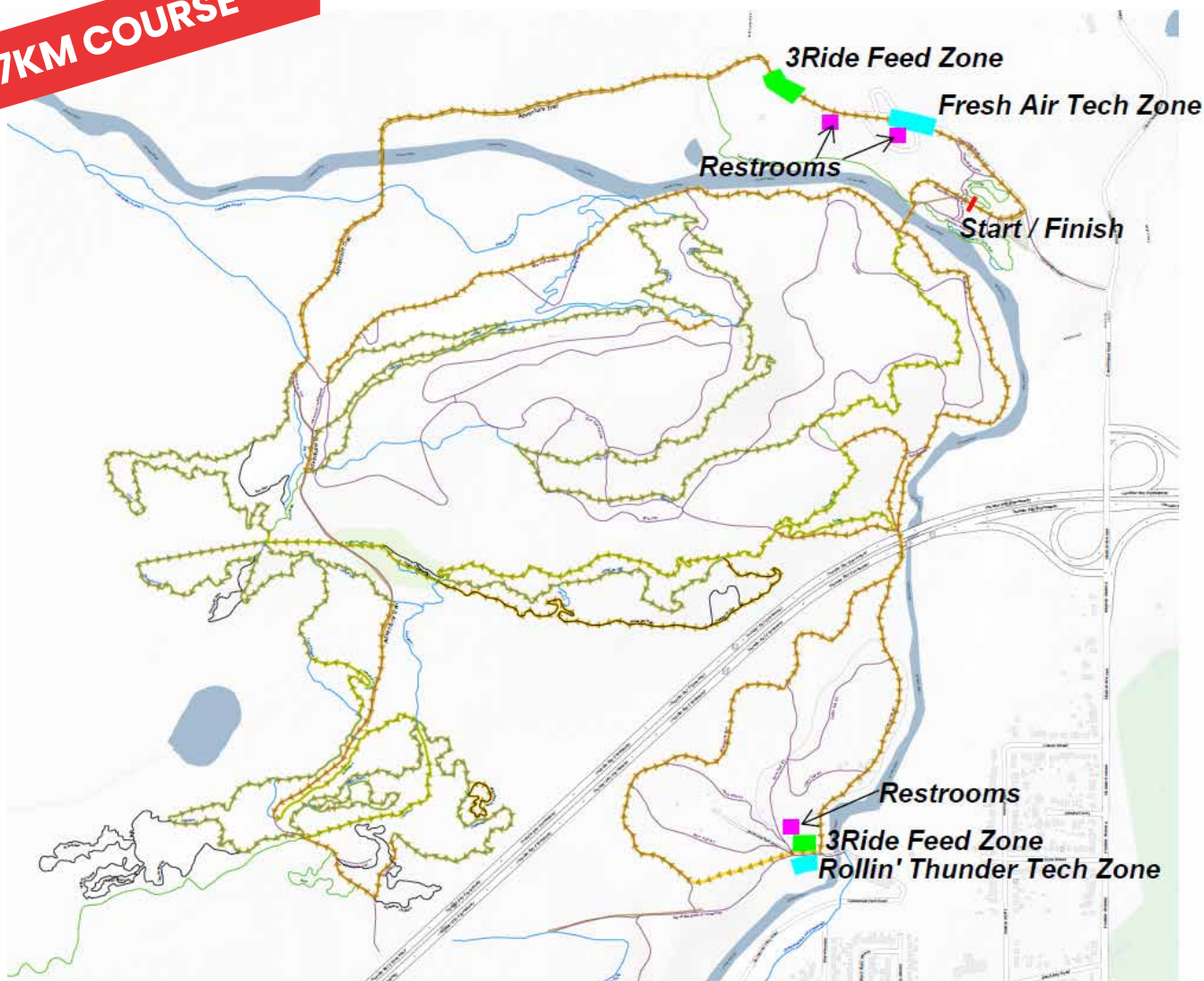
Your time is calculated using race start time. Your finish time will be determined by when your race plate with RFID tag crosses the finish line.

RACE MAPS

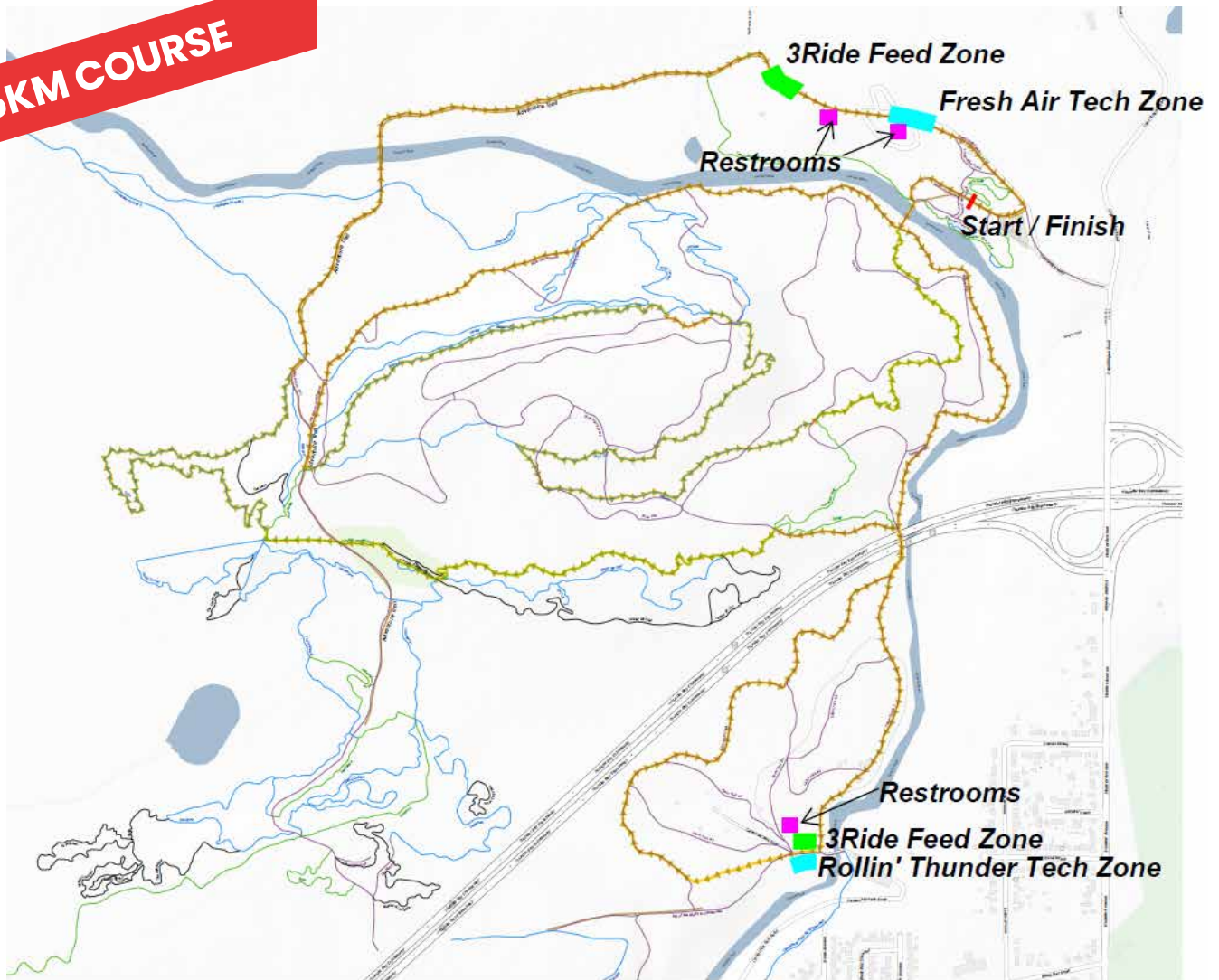
XCM CANADIAN CHAMPIONSHIP



27KM COURSE



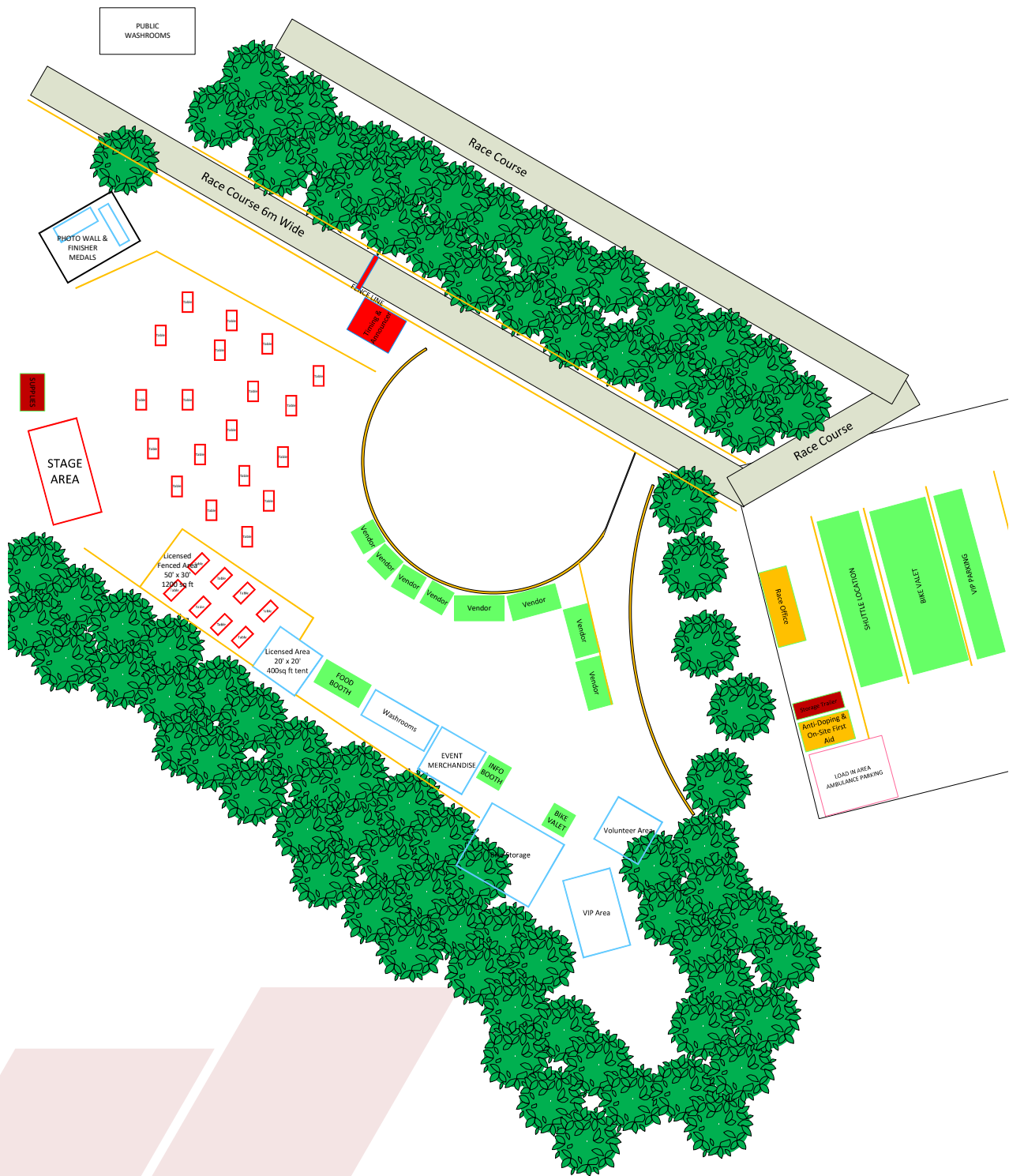
15KM COURSE



5KM COURSE



FIELD MAP



RACE INFORMATION

For Full Race Information please refer to technical guide

FEED ZONES POWERED BY 3 RIDE BICYCLE CO

There will be two feed zones on course with water, Gatorade, and some energy bars available.

CENTENNIAL TECH ZONE POWERED BY ROLLIN THUNDER

The staff at Rollin Thunder will be stationed about half way through the loop to offer neutral support/repairs to riders.

TROWBRIDGE TECH ZONE POWERED BY FRESH AIR

The staff at Fresh Air will be stationed near the end of each lap to offer neutral support/repairs to riders.

BIKE WASH POWERED BY FRESH AIR

Those racing in the Elite category can take advantage of the bike wash located up in the campground for all their post race bike wash needs.

TIMING

Your race time is calculated using the race start time, and finishing time is calculated by RFID Chip crossing the finish line.

RULES

- Helmets must be worn when on the bike, and your chin strap must be buckled.
- Unsportsmanlike Conduct is grounds for disqualification.
- Leave No Trace no garbage, clothing etc, shall be thrown on the course.
- No Pedal Assist/E-Bikes Allowed.
- No Pets on course.
- No Earphones/Earbuds.
- Timing Chip (on number plate) must attach to front of bike.
- You must finish with the same bike and the same number plate you started with.
- DNFs must report to timing.
- No E-bikes allowed.
- **Course Closure** at 12:00pm and 7:00pm.

TIME CUTOFFS

Those racing in the 5 km, 15 km, and 27 km races have until 12:15 to finish their races. The course will officially close at 12:00pm, with anybody out on the course continuing to ride at their own risk and being considered a DNF.

Those racing in the 60km and 90km races will have until 7:15pm to finish their races. The course will officially close at 7:15, with anybody out on the course continuing to ride at their own risk and being considered a DNF.

CATEGORIES

Challenge Category 5km Mini-Miner

Challenge Category 15km Short Course

Challenge Category 27km Medium Course

Challenge Category 60km Long Course

XCM Canadian Championship Race 90km

AWARDS

5km – Podium Prizes

15km – Podium Prizes

27km – Podium Prizes

60km – 29 and Under Podium Prizes

60km – 30–44 Podium Prizes

60km – 45+ Podium Prizes

XCM Canadian Championship Race
Elite Male/Female

1. \$2500.00
2. \$1500.00
3. \$500.00
4. \$350.00
5. \$150.00

FREQUENTLY ASKED QUESTIONS

CAN SPECTATORS ATTEND? Yes! We encourage all spectators to bring noise makers and cheer on everyone as they ride by!

CAN I BRING MY DOG? Dogs are welcome in Kinsmen Park, but are prohibited from being on the race course. We also ask you to please clean up after your pet and they must be on leash at all times.

DO YOU HAVE TO BE REGISTERED FOR THE EVENT TO ACCESS THE BEER GARDENS?

No, spectators can access the beer gardens during the event.

WILL YOU HAVE A PLACE TO STORE MY BIKE AFTER THE RACE?

Yes, we have a limited bike valet to ensure your bike stays safe after you complete the race and to keep the festival area as clear as possible.

Most importantly its FREE!

SPONSORS

We cannot thank our sponsors enough. It is what makes this event possible for Blacksheep Mountain Bike Club. Our club operates as a non-profit and continues to invest significant dollars into the trail system located in Thunder Bay. As a benefactor of our sponsors' commitment, you can show your appreciation by thanking them for their participation and supporting them with your patronage.

